

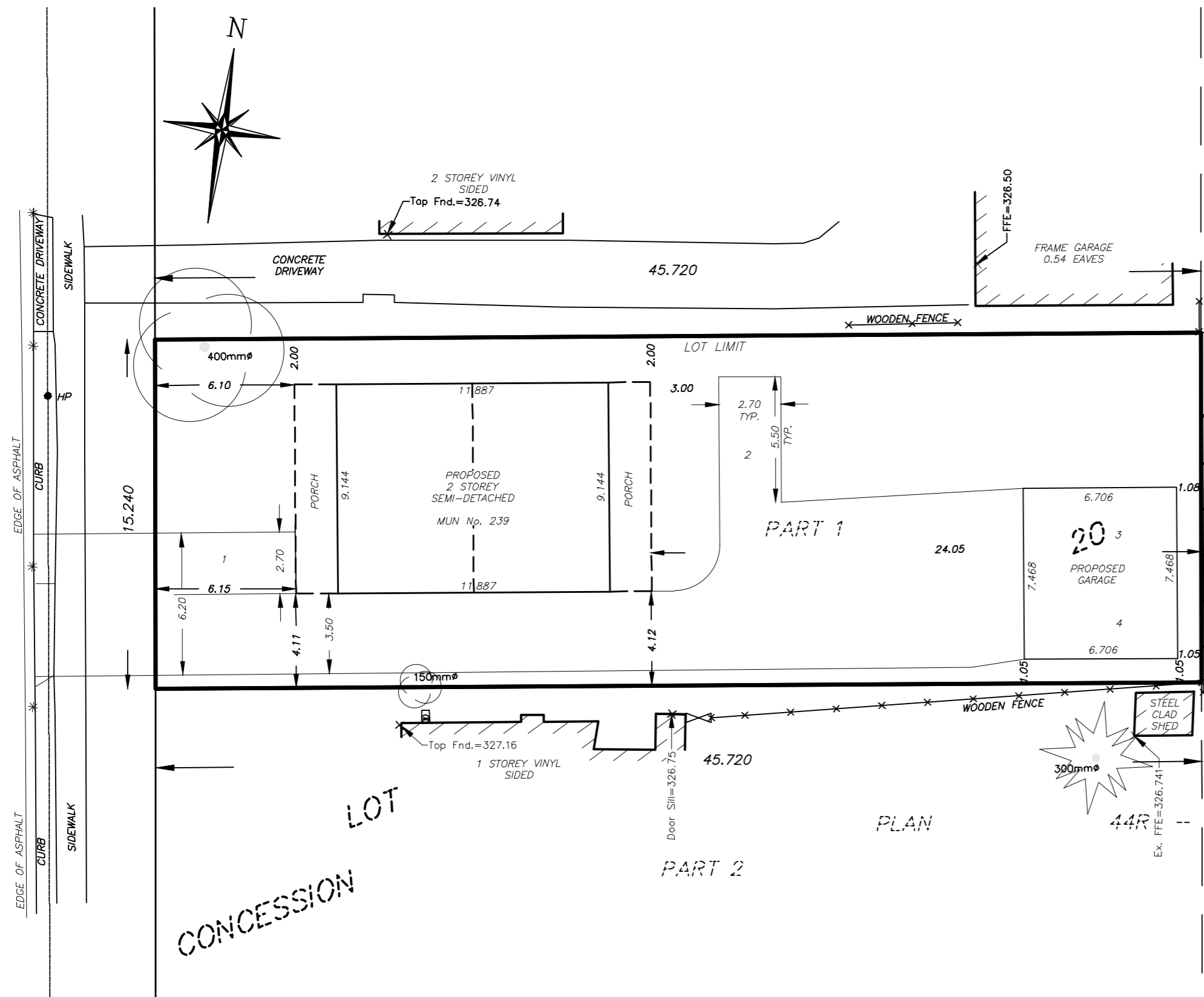
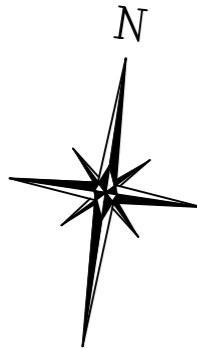
MINOR VARIANCE
 OF PART OF
LOT 20
CONCESSION 18
 (GEOGRAPHIC TOWNSHIP OF BLANSHARD)
 NOW IN THE
TOWN OF ST. MARYS
COUNTY OF PERTH

SCALE 1:200
 0 1 2 3 4 8 12 METRES

MTE OLS LTD.
ONTARIO LAND SURVEYORS

METRIC:
 DISTANCES SHOWN ON THIS PLAN ARE IN METRES AND
 CAN BE CONVERTED TO FEET BY DIVIDING BY 0.3048.

JAMES STREET



Name	Proposed	R3 semi on one lot
Lot Area	698.03	666 m ²
Lot Frontage	15.24	18 m
Lot Depth	45.72	37 m
Side Yard (2 storey)	2/4.1	1.8/2.7 m
Front Yard	6.1	6 m
Rear Yard	24.05	7.5 m
Lot Coverage	20.4	40 %
Driveway width max.	6.5	8 m
Detached Garage	50	50 m ²

© COPYRIGHT 2021, MTE OLS LTD.

MTE ONTARIO LAND SURVEYORS LTD.
 365 HOME STREET
 STRATFORD, ONTARIO, N5A 2A5
 TEL: 519-271-7952

Cad File: P:\P\41531\201\41531-201-SK1.DWG
 COGO : 41531-201.ASC
 Drawn By : **C. PERKS**
 Checked By : **D.HASTINGS**
 File No : **41531-201-SK1 (S)**