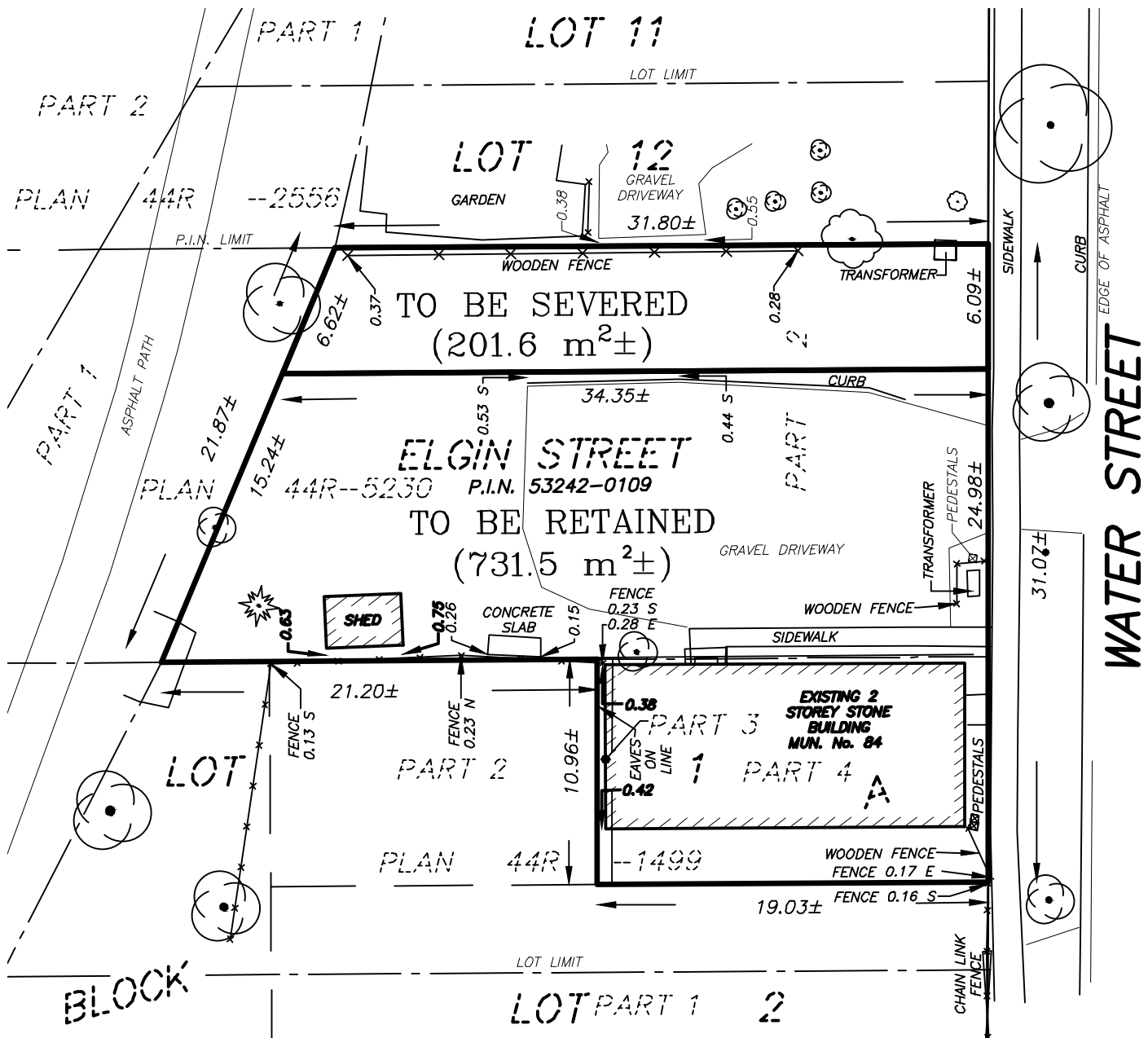


SEVERANCE SKETCH
 OF PART OF
LOT 1, BLOCK A
WEST SIDE OF WATER STREET
REGISTERED PLAN NO. 225
 OF PART OF
ELGIN STREET
REGISTERED PLAN NO. 225
 IN THE
TOWN OF ST. MARYS
COUNTY OF PERTH

SCALE 1:300



MTE OLS LTD.
ONTARIO LAND SURVEYORS



CAUTION:

THIS IS NOT A PLAN OF SURVEY AND SHALL NOT BE USED EXCEPT FOR THE PURPOSES INDICATED IN THE TITLE BLOCK.

THIS SKETCH IS PREPARED FOR MARIANNE DE BRABANDERE
 DATE : SEPTEMBER 24, 2020 © COPYRIGHT 2020, MTE OLS LTD.

METRIC:

DISTANCES SHOWN ON THIS PLAN ARE IN METRES AND CAN BE CONVERTED TO FEET BY DIVIDING BY 0.3048.

AREAS:

AREAS SHOWN ON THIS PLAN ARE IN SQUARE METRES AND CAN BE CONVERTED TO ACRES BY DIVIDING BY 4046.8564.



MTE ONTARIO LAND SURVEYORS LTD.
 365 HOME STREET
 STRATFORD, ONTARIO, N5A 2A5
 TEL: 519-271-7952

Cad File: P:\38640\101\38640-101-SV1.DWG

COGO : 38640-101-UTMGROUND.ASC

Drawn By : C. PERKS

Checked By : D. REAUME

File No : 38640-101-SV1 (S)