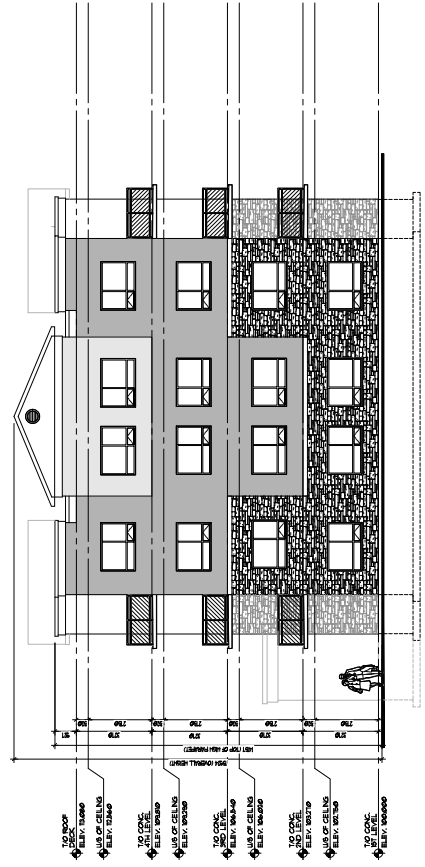
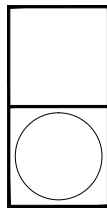


NORTH ELEVATION (FACING PARKING LOT)



WEST ELEVATION (FACING JAMES STREET)



**gb architect inc.**  
 100 GARDEN AVENUE SUITE 101  
 STRATFORD, ONTARIO, N5A 3Z2  
 PHONE: (519) 272-0073 FAX: (519) 272-1433



OSCAR R. BILLYMORE, P. ENG., O.A.S. No. 9481, A.I.A. No. 1010  
 Principal Architect of GB ARCHITECT INC. is the  
 designer for the project with respect to all architectural  
 and engineering drawings. The Architect is a member of the  
 Ontario Association of Architects and has no design  
 responsibility for the project. GB ARCHITECT INC.  
**REG. NO. 467**  
 as per requirements of the Ministry of Municipal  
 Affairs and Housing Plan 214\*

The Architect does not accept responsibility for  
 any errors or omissions in the drawings or specifications  
 with respect to design activities. The Architect will  
 assume no liability for the number.

NO.	DATE	REVISION

<b>RESIDENTIAL DEVELOPMENT</b>	
665 JAMES STREET, NORTH ST. MARYS, ONTARIO	
PRINT DATE:	August 24, 2020
DATE:	August 24, 2020
DRAWN BY:	G.R.B.
CHECKED BY:	G.R.B.
SCALE:	1:100
PROJECT No.:	19477

**NORTH AND WEST ELEVATIONS**

# A3.2

gb

DO NOT SCALE DRAWINGS. DIMENSIONS MUST BE READ IN CONJUNCTION WITH WRITTEN SPECIFICATIONS. ALL WORK SHALL BE CARRIED OUT ACCORDING TO LATEST EDITIONS OF THE CANADIAN BUILDING CODES, OTHER APPLICABLE CODES, AND APPROVED HAVING JURISDICTION. CHECK AND VERIFY ALL DIMENSIONS AND REPORT ALL DISCREPANCIES OR AMBIGUITIES TO THE PROJECT MANAGER TO ENSURE CORRECT.