

T
RNER

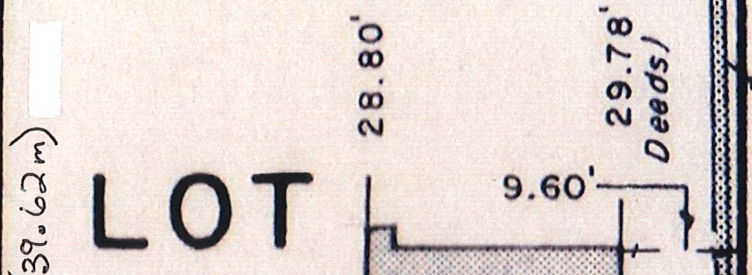
SIB

WIDDER ST 115.96'

meas. STREET W

57.98' (17.67m)
(INST. 281528 - Set)

57.98' meas
(57.98' +/- INST. 138)



LOT

28.80'

29.78'
Deeds

9.60'

Cut
cross

39.85' (674 - Set)

11

brick garden wall
hydrangea hedge
along William St.

23.85' (7.27m)

INST. 281528

1 Storey
Brick
House
No 36

130.21' meas / 130.21' +/-
0.5' Concrete curb

driveway

Brick
House
No 34

10.98' (674 notes - set)

Limit

WILLIAM STREET

current existing
variance from
property line
2.4384m
to west wall

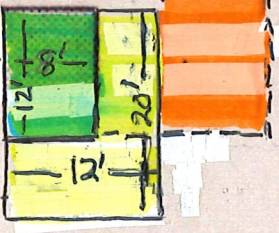
existing shed
8' x 12'
(2.43m x 3.65m)

proposed new
12' x 20'
(3.65m x 6.09m)

existing
Cement pad
extends from
west wall of
existing/proposed
shed over to
dotted line as
a patio (674)

Lot

24.36' (7.42m)



9.0'

Pine
Tree

Deed Line

12

INST. No
281528

INST. No 138279

Maple
Tree

N 8° 09' W

Sidewalk

0.10'

Limit

Lot

Garden (INST. 281528 - meas)

N 81° 46' E 57.98'

Deed

Line

IB (674)

Centre line of hedge
on line

Pole

Proposed new will
leave us (4') 1.21m
between east corner
of shed & back corner
of house as a
walk through to
patio/back yard.

09W
89'
46024, 281528

house

INST. No 246024

LOT

13