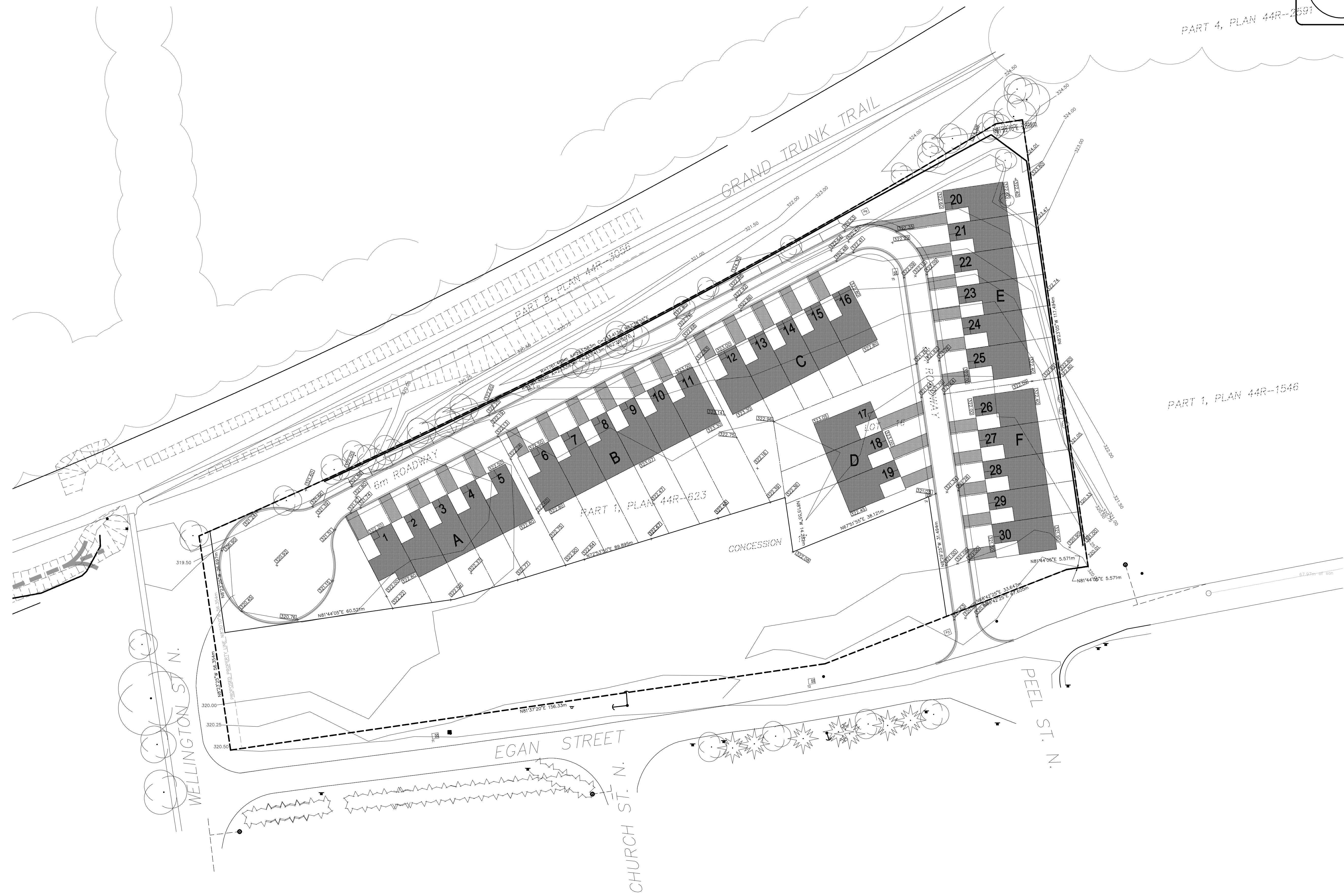


PART 4, PLAN 44R-2691

PART 1, PLAN 44R-1546



NOTES

- DO NOT SCALE FROM THIS DRAWING
- ALL DIMENSIONS ARE TO BE CHECKED ON SITE
- THIS DRAWING IS TO BE READ IN CONJUNCTION WITH ALL RELEVANT SPECIFICATIONS, ARCHITECTURAL, STRUCTURAL, MECHANICAL AND ELECTRICAL DRAWINGS.

LEGEND

TYPICAL LEGEND	
	EXISTING CONTOURS (GEODETIC)
	EXIST. ELEVATION
	EXIST. & DESIGN ELEVATION
	DESIGN ELEVATION
	EXISTING MANHOLE (STM, SAN)
	EXISTING CATCH BASIN
	EXISTING STREETLIGHT
	EXISTING TRANSFORMER
	EXISTING SWITCH PIT
	EXISTING SEWER FLOW (STM, SAN)
	EXISTING FIRE HYDRANT
	EXISTING VALVE (GAS OR WATER)
	PROPOSED MANHOLE (STM, SAN)
	PROPOSED CATCH BASIN
	PROPOSED DOUBLE CATCH BASIN
	PROPOSED STORM SEWER FLOW
	PROPOSED SANITARY SEWER FLOW
	PROPOSED WATERMAIN
	FIRE HYDRANT
	VALVE (GAS OR WATER)
	PROPOSED TRANSFORMER
	PROPOSED PIT
	PROPOSED STREETLIGHT
	FLOW DIRECTION OF SURFACE WATER IN A SWALE
	FLOW DIRECTION OF SURFACE WATER

No.	DATE	NAME	DESCRIPTION
REVISIONS			

JOHNSON
ENGINEERING CONSULTANTS
 STRUCTURAL - CIVIL - MUNICIPAL
 368 HURON STREET, STRATFORD, ONTARIO N5A 5T5 FAX (519) 271-5353 http://www.jecinc.on.ca (519) 271-9923 jecinc@jecinc.on.ca

CLIENT:
LANG CONTRACTING
 54 CRAWFORD ST.
 STRATFORD, ON.
 N5A 5Y4

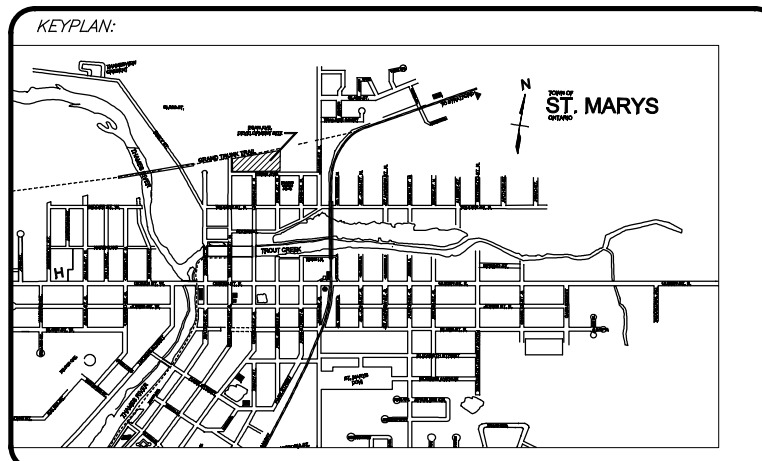
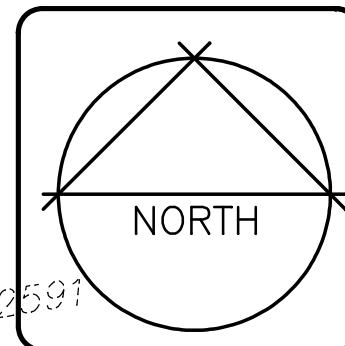
AUTHORITY:
TOWN OF ST. MARYS
 175 QUEEN STREET EAST,
 ST. MARYS, ON.
 N4X 1B6

PROJECT:
EGAN AVENUE DEVELOPMENT,
ST. MARYS, ON

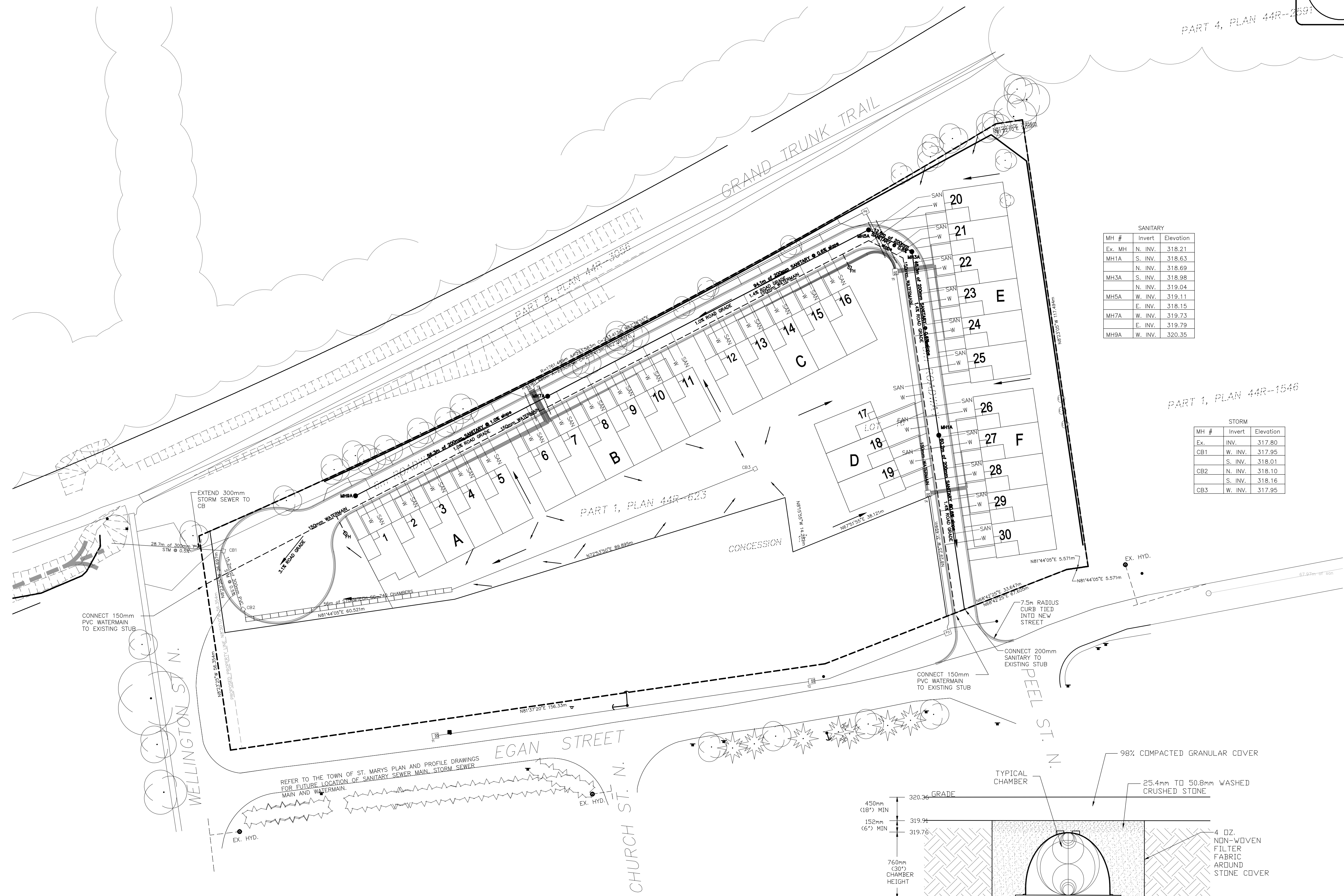
DRAWING TITLE:
CONDO GRADING PLAN

SCALE: 1:500	
DATE: OCTOBER 14, 2016	
DESIGNED BY: BRIAN JOHNSON, P. ENG.	
DRAWN BY: KdH	
J.E.C. FILING No.: 20160057	

DWG. No.: C04 **SHEET No.:** 6 of 9



PART 4, PLAN 44R-2691



SANITARY

MH #	Invert	Elevation
Ex. MH	N. INV.	318.21
MH1A	S. INV.	318.63
	N. INV.	318.69
MH5A	S. INV.	318.98
	N. INV.	319.04
MH5A	W. INV.	319.11
	E. INV.	318.15
MH7A	W. INV.	319.73
	E. INV.	319.79
MH9A	W. INV.	320.35

STORM

MH #	Invert	Elevation
Ex. INV.		317.80
CB1	W. INV.	317.95
	S. INV.	318.01
CB2	N. INV.	318.10
	S. INV.	318.16
CB3	W. INV.	317.95

- NOTES**
- DO NOT SCALE FROM THIS DRAWING
 - ALL DIMENSIONS ARE TO BE CHECKED ON SITE
 - THIS DRAWING IS TO BE READ IN CONJUNCTION WITH ALL RELEVANT SPECIFICATIONS, ARCHITECTURAL, STRUCTURAL, MECHANICAL AND ELECTRICAL DRAWINGS.
- LEGEND**
- TYPICAL LEGEND**
- 353.0 — EXISTING CONTOURS (GEODETIC)
 - 347.2 — EXIST. ELEVATION
 - 347.2 — EXIST. & DESIGN ELEVATION
 - 347.2 — DESIGN ELEVATION
 - — EXISTING MANHOLE (STM, SAN)
 - — EXISTING CATCH BASIN
 - — EXISTING STREETLIGHT
 - ⊠ — EXISTING TRANSFORMER
 - — EXISTING SWITCH PIT
 - — EXISTING SEWER FLOW (STM, SAN)
 - ⊕ — EXISTING FIRE HYDRANT
 - ⊕ — EXISTING VALVE (GAS OR WATER)
 - — PROPOSED MANHOLE (STM, SAN)
 - — PROPOSED CATCH BASIN
 - — PROPOSED DOUBLE CATCH BASIN
 - — PROPOSED STORM SEWER FLOW
 - — PROPOSED SANITARY SEWER FLOW
 - — PROPOSED WATERMAIN
 - ⊕ — FIRE HYDRANT
 - ⊕ — VALVE (GAS OR WATER)
 - ⊠ — PROPOSED TRANSFORMER
 - — PROPOSED PIT
 - — PROPOSED STREETLIGHT
 - — FLOW DIRECTION OF SURFACE WATER IN A SWALE
 - — FLOW DIRECTION OF SURFACE WATER

REVISIONS

No.	DATE	NAME	DESCRIPTION

JOHNSON ENGINEERING CONSULTANTS
 STRUCTURAL — CIVIL — MUNICIPAL
 368 HURON STREET, STRATFORD, ONTARIO
 (519) 271-9923
<http://www.jecinc.on.ca>

CLIENT:
LANG CONTRACTING
 54 CRAWFORD ST.
 STRATFORD, ON.
 N5A 5Y4

AUTHORITY:
TOWN OF ST. MARYS
 175 QUEEN STREET EAST,
 ST. MARYS, ON.
 N4X 1B6

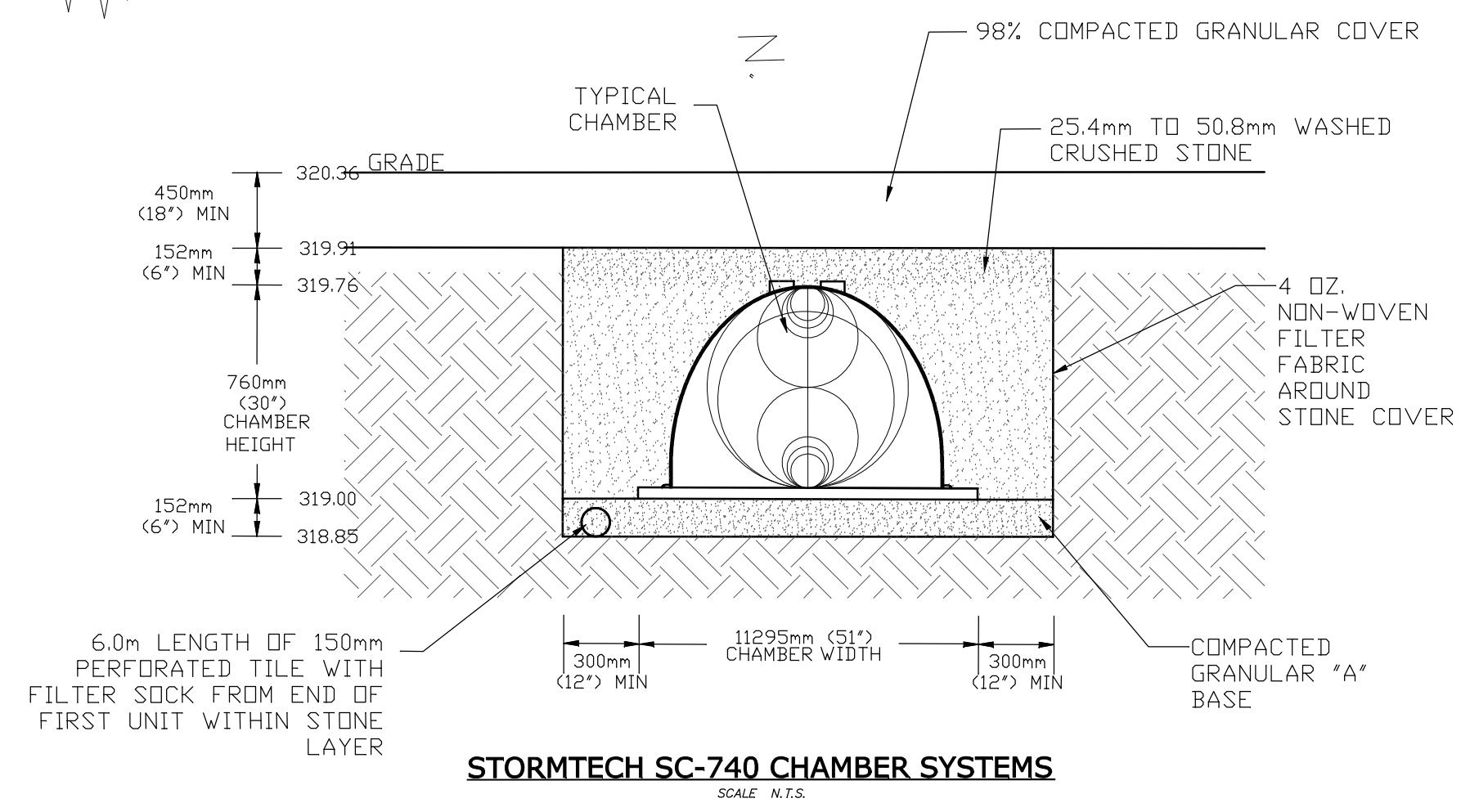
PROJECT:
**EGAN AVENUE DEVELOPMENT,
 ST. MARYS, ON**

DRAWING TITLE:
CONDO SERVICING

SCALE: 1:500
DATE: OCTOBER 14, 2016
DESIGNED BY: BRIAN JOHNSON, P. ENG.
DRAWN BY: KdH
J.E.C. FILE NO.: 20160057

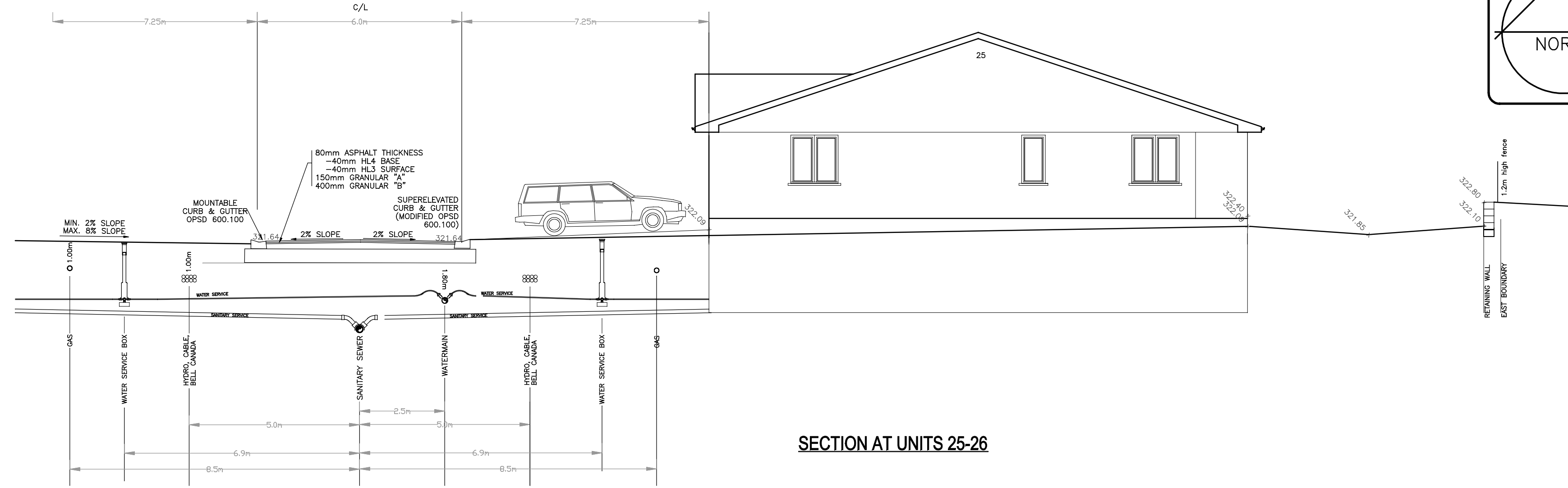
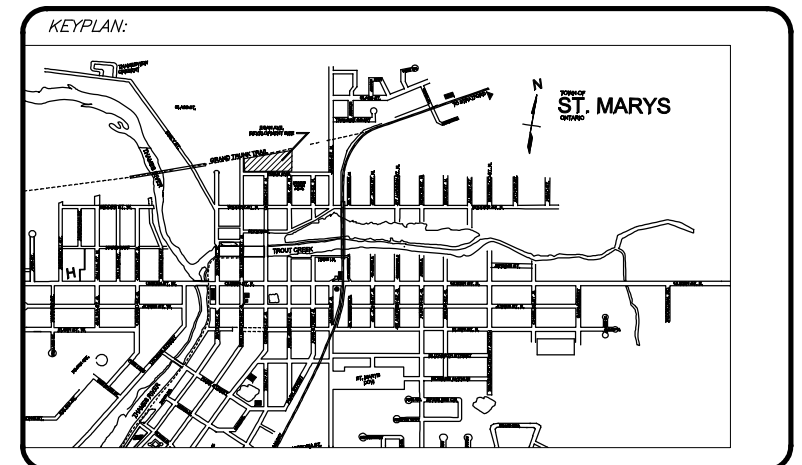
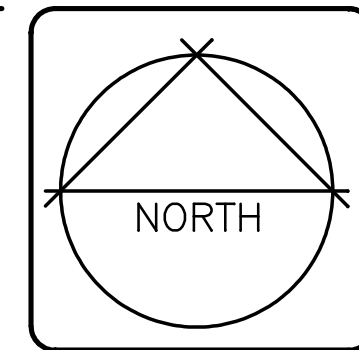
APPROVED BY:

 B. D. JOHNSON
 PROFESSIONAL ENGINEER
 PROVINCE OF ONTARIO

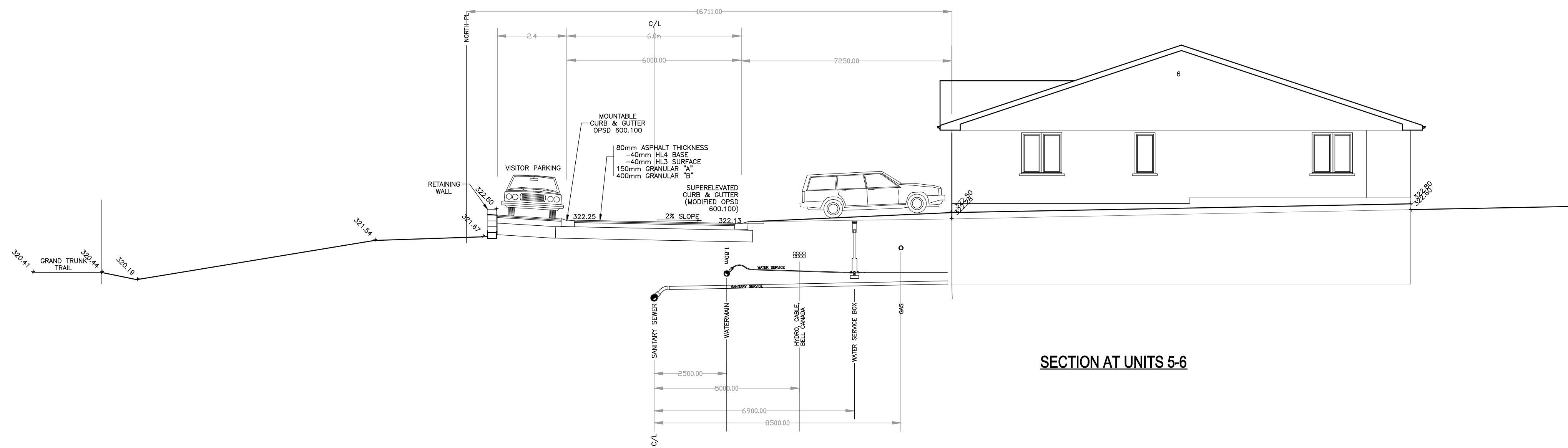


STORMTECH SC-740 CHAMBER SYSTEMS
 SCALE: N.T.S.

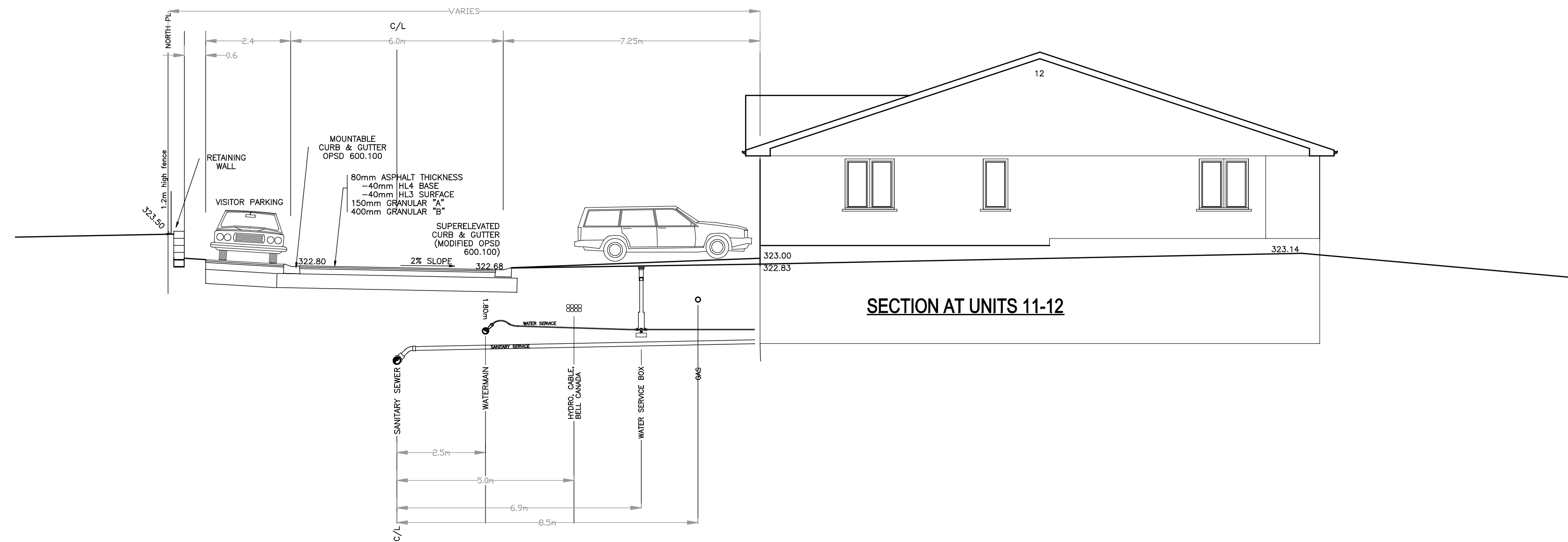
PLAN - 09 - 10/16/16



SECTION AT UNITS 25-26



SECTION AT UNITS 5-6



SECTION AT UNITS 11-12

NOTES

- DO NOT SCALE FROM THIS DRAWING
- ALL DIMENSIONS ARE TO BE CHECKED ON SITE
- THIS DRAWING IS TO BE READ IN CONJUNCTION WITH ALL RELEVANT SPECIFICATIONS, ARCHITECTURAL, STRUCTURAL, MECHANICAL AND ELECTRICAL DRAWINGS.

LEGEND

TYPICAL LEGEND

— 353.0 —	EXISTING CONTOURS (GEODETIC)
347.2	EXIST. ELEVATION
342.2	EXIST. & DESIGN ELEVATION
353.0	DESIGN ELEVATION
○	EXISTING MANHOLE (STM, SAN)
□	EXISTING CATCH BASIN
□	EXISTING STREETLIGHT
□	EXISTING TRANSFORMER
□	EXISTING SWITCH PIT
—	EXISTING SEWER FLOW (STM, SAN)
○	EXISTING FIRE HYDRANT
EX-FH	EXISTING VALVE (GAS OR WATER)
v	EXISTING VALVE (GAS OR WATER)
●	PROPOSED MANHOLE (STM, SAN)
■	PROPOSED CATCH BASIN
■	PROPOSED DOUBLE CATCH BASIN
—	PROPOSED STORM SEWER FLOW
—	PROPOSED SANITARY SEWER FLOW
—	PROPOSED WATERMAIN
○	FIRE HYDRANT
FH	FIRE HYDRANT
○	VALVE (GAS OR WATER)
v	VALVE (GAS OR WATER)
□	PROPOSED TRANSFORMER
□	PROPOSED PIT
□	PROPOSED STREETLIGHT
—	FLOW DIRECTION OF SURFACE WATER IN A SWALE
—	FLOW DIRECTION OF SURFACE WATER

No.	DATE	NAME	DESCRIPTION
REVISIONS			

JOHNSON
ENGINEERING CONSULTANTS
 STRUCTURAL - CIVIL - MUNICIPAL

368 HURON STREET,
 STRATFORD, ONTARIO
 N5A 5T5 FAX (519) 271-5353
<http://www.jecinc.on.ca>

(519) 271-9923
 jecinc@jecinc.on.ca

CLIENT:
LANG CONTRACTING
54 CRAWFORD ST.
STRATFORD, ON.
N5A 5Y4

AUTHORITY:
TOWN OF ST. MARYS
175 QUEEN STREET EAST,
ST. MARYS, ON.
N4X 1B6

PROJECT:
EGAN AVENUE DEVELOPMENT,
ST. MARYS, ON

DRAWING TITLE:
CONDO BLOCK ROAD
CROSS-SECTIONS

SCALE: 1:500

DATE: OCTOBER 14, 2016

DESIGNED BY: BRIAN JOHNSON, P. ENG.

DRAWN BY: KdH

J.E.C. FILING No: 20160057

