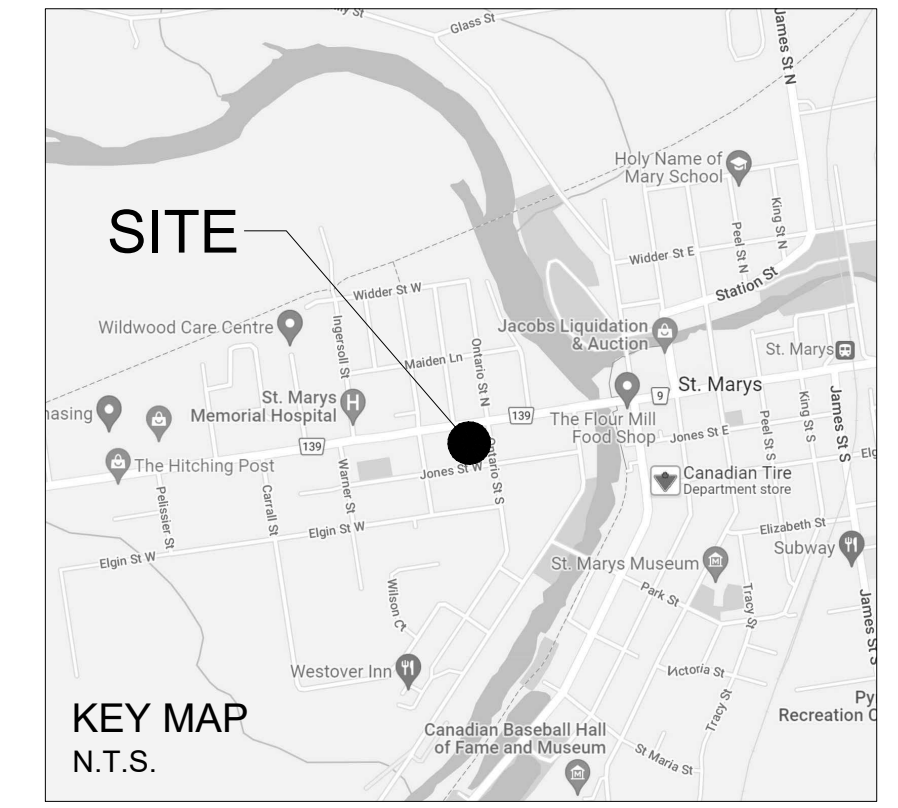
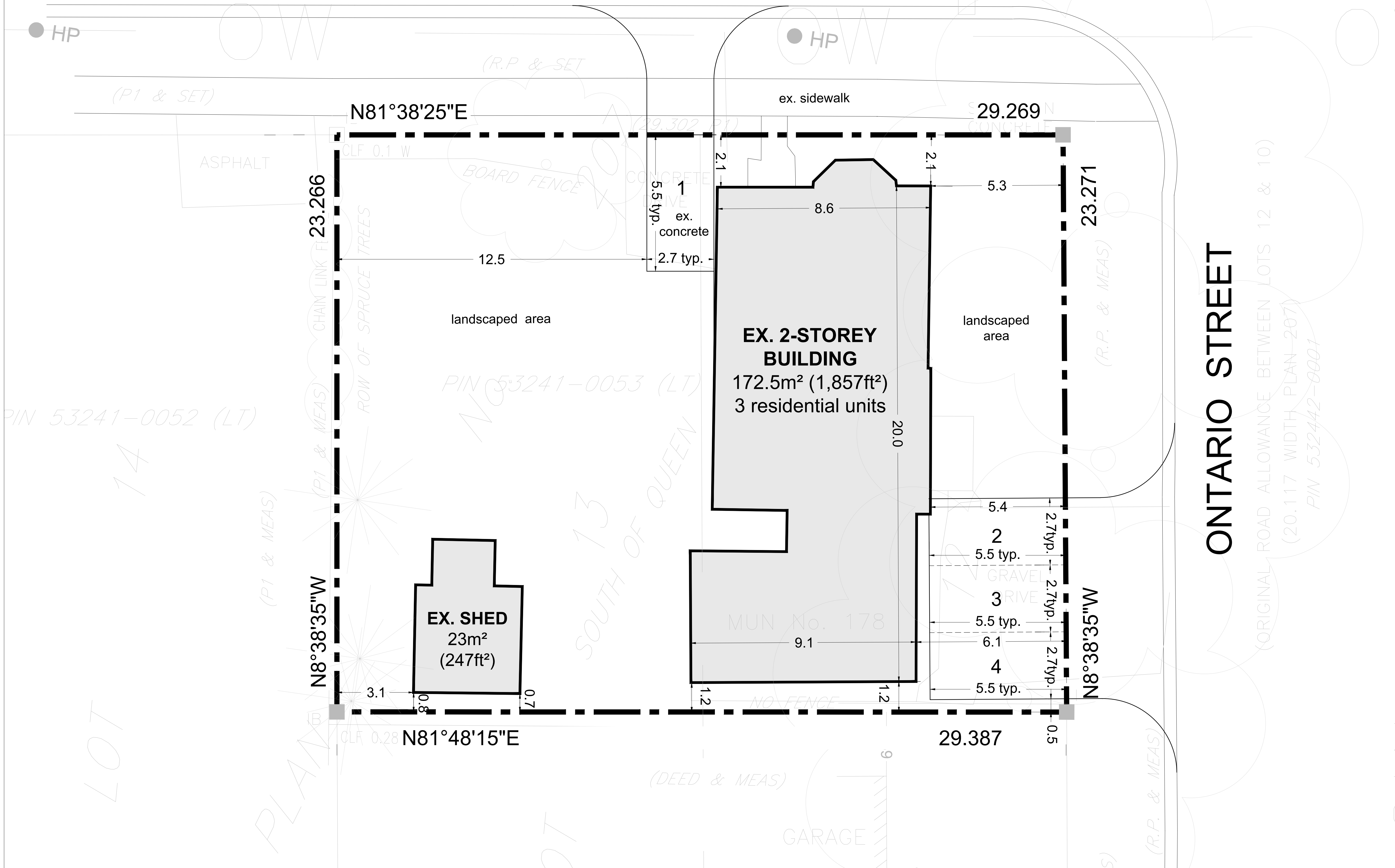


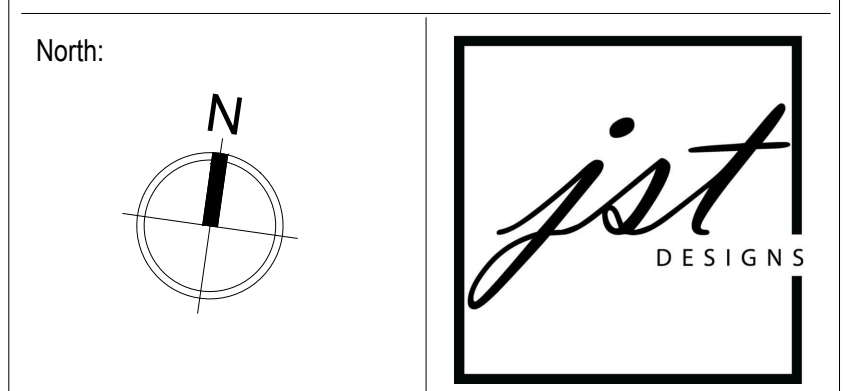
QUEEN STREET

(ORIGINAL ROAD ALLOWANCE BETWEEN LOTS 21 & 22)
(20.117 WIDTH PLAN 207)

PIN 53248-0002



SITE DATA:
 ZONE: Residential Zone Three (R3)
 SITE AREA: 682.7m²
 EXISTING BUILDING AREA: 172.5m² (1,857ft²)
 NUMBER OF UNITS: 3 units
 LOT COVERAGE: 25%
 PARKING REQUIRED: 5 spaces (2 per unit)
 PARKING PROPOSED: 4 spaces



Project Name:
178 QUEEN ST W
ST. MARYS
 PART 1 - PLAN OF SURVEY OF PART OF LOTS 12, 13
 (SOUTH OF QUEEN) REGISTERED PLAN 207
 IN THE TOWN OF ST. MARYS COUNTY OF PERTH

BAKER
 Planning Group

Sheet Title:
CONCEPTUAL SITE PLAN

DISCLAIMER
 Site boundary and dimensions are approximate and subject to change based on a formal land survey. The design is conceptual and subject to engineering and municipality confirmation and input.

Version No: 1	Sheet No: SP-1
Scale: 1:75 METRIC	Date: 05/30/2022
File Location: 2207sp_rev3.dwg	Drawn By: J.THIBERT